

75
YEARS
1947 – 2022

Plastic Strapping Heads



- Advanced in design and technology
- Consistent performance and seal efficiency
- Durable and robust build, for a long and reliable service life
- Straight forward construction, easy to access and service

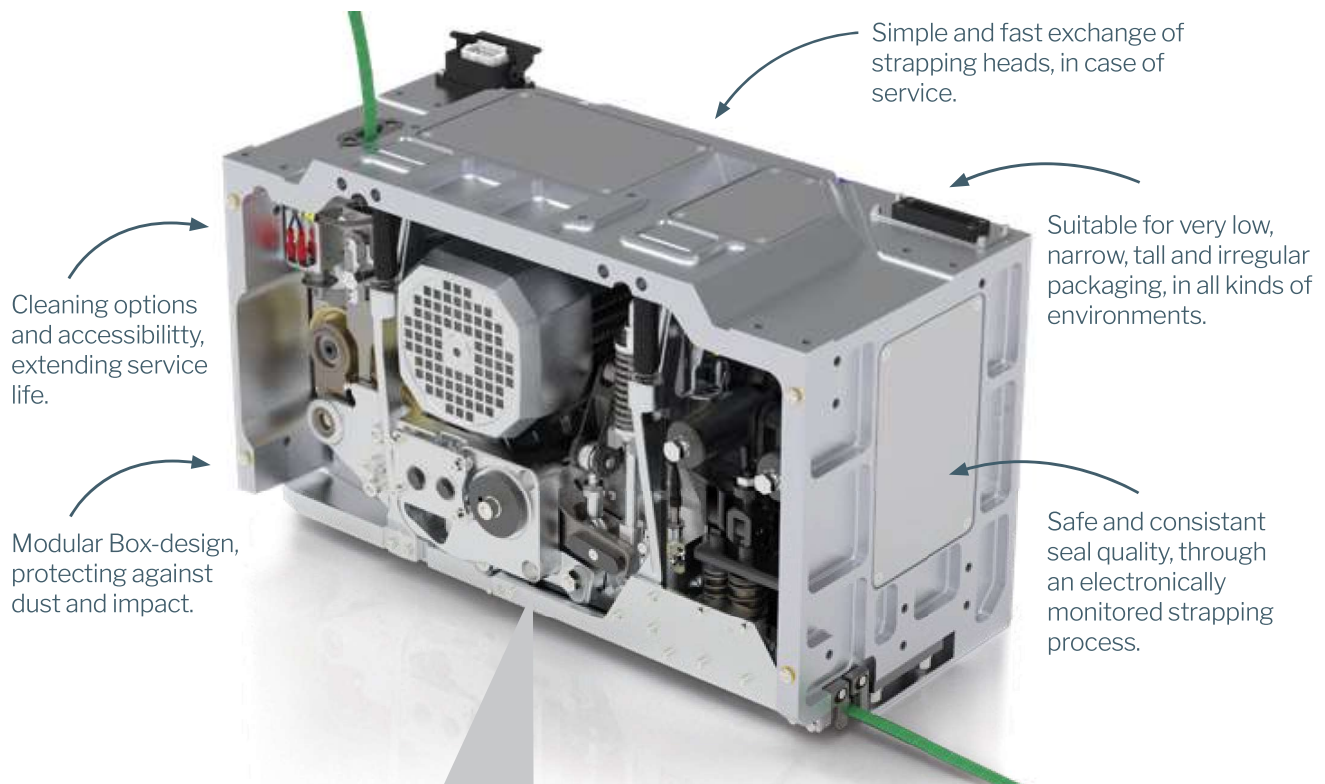
FROMM | STRAPPING SOLUTIONS

Plastic Strapping Heads
for Automatic and Semi-automatic
Strapping Solutions with plastic strap

PET Strapping heads

A family for the most diverse and tough operating conditions

Sophisticated industrial design and high quality standards, make FROMM strapping heads the everyday hero that can withstand the toughest conditions. They also fit perfectly into any existing operation.



Service	Value
Strap dimensions	8 - 32 mm x 0,5 - 1,53 mm (0.31 - 1/4" x 0.02 - 0.06")
Tension force	Max. 7.000 N (1,574 lbs) adjustable
Seal efficiency*	Up to approx. 80% of strap break strength

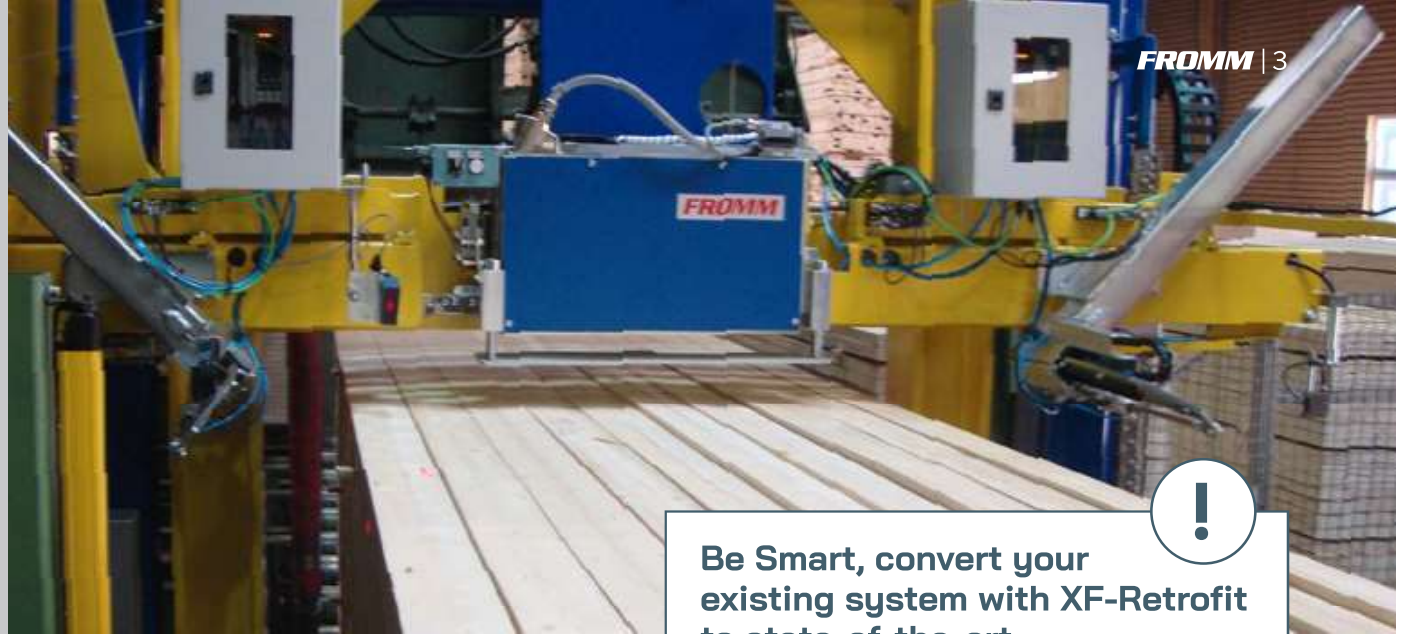


For more product-specific information about our strapping heads, please refer to the relevant product data sheets or scan the QR code to go to our homepage www.fromm-pack.com

Packaging examples

Thanks to our leading Strapping Solutions, our customers' products are optimally strapped and are therefore easy to handle during transport and in storage. Here just a few examples of applications on hexagonal, unstable, round and rectangular product assemblies.





Be Smart, convert your existing system with XF-Retrofit to state-of-the-art

With the XF-Retrofit package, you convert your existing strapping machine(s) into a state-of-the-art Smart system, improving efficiency and adding value to your strapping process.

Please feel free to contact your FROMM representative for more information about this option.

Applications

- Choice of 6 different strapping heads
- Perform excellent under a great variety of working conditions
- Suitable for vertical and horizontal strapping with top, side or bottom seal
- For clean, dusty or polluted environments
- Easy to integrate into new and existing systems
- Available for automatic or semi-automatic operation

Technology and Operation

- State-of-the-art design, construction and control technology
- Electrical operation
- Vibro or thermal sealless closure
- High and consistent sealing efficiency*
- Choice of high strapping speeds and high or low tension forces

Service and Quality

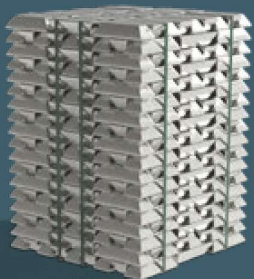
- Compact and easily accessible
- Virtually maintenance-free, durable design
- Different mounting options and quick couplings make changes possible in an instant
- Designed and manufactured under the strict FROMM quality standards
- Standard 12 months manufacturer's warranty. Confirming your choice.

* Seal efficiency is a result of strapping technology and the applied strap quality.



R&D and Manufacturing

FROMM strapping heads are developed under strict rules and regulations in the FROMM Technology centre in Achern, Germany. Meeting today's highest quality, performance and safety standards. Their state of the art technology, straight forward design and construction in combination with the applied materials and endurance testing, make them the best in their segments.



High-quality polyester (PET) strap

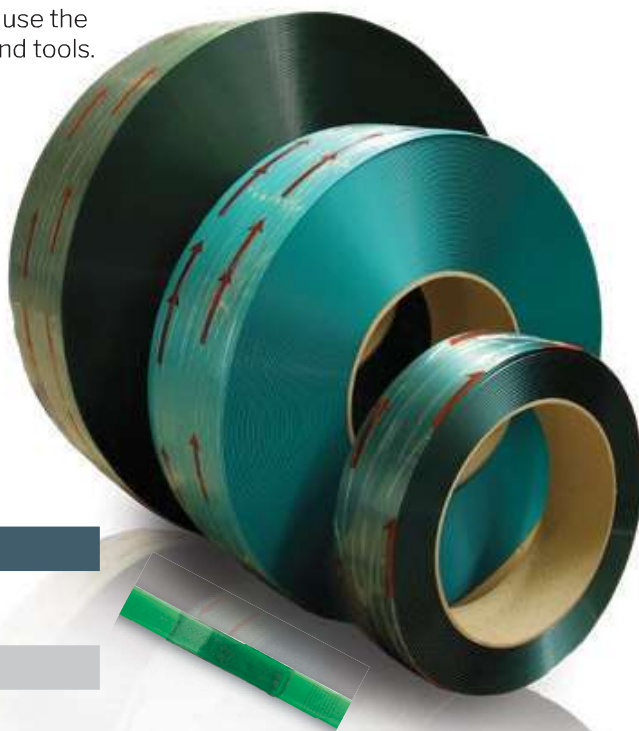
FROMM STARstrap™: High-end, Advanced, Consistent and Durable

In the development and production of our PET-strap, we use the same high quality standards as those for our machines and tools.

Some notable advantages of PET strapping compared to steel strapping:

- Made from premium recycled PET (bottle grade)
- Higher stretch properties
- High breaking strength
- Constant tensile strength
- Absorbs shock loads, shrinkage and elongation during transport and handling
- Lighter weight, more meters per kg
- Easier to handle and safer to use

Service	Strap data
Strap dimensions	8 – 32 mm x 0,5 – 1,27 mm (0.31 - 1¼" x 0.02 - 0.05")
Break strength	Max. 18.500 N (4,078 lbs)



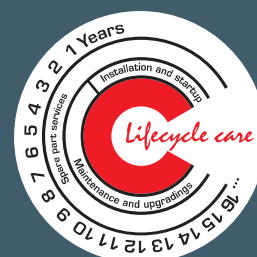
Lifecycle Care

The extra care for your FROMM products

The Lifecycle Care program for your FROMM machine and tool equipment consists of service modules that you can configure according to your own insight and needs. It all starts with a thorough joint assesment and planning.

On this basis, choices can be made between fixed, variable and individual service intervals with different service levels. Possibly in combination with spare part deliveries and interim software updates.

In addition, the Lifecycle Care program offers its progressive Smart-Service-Planning program; with service modules such as EarlyVision™ Remote Monitoring, Remote Assistance and Visual Assistance. Modules that you can also organize entirely according to your own insight and needs.



Your benefits

- Minimizes maintenance intervals and downtime
- Extends the service life
- Limits maintenance costs
- Optimizes the reliability of your equipment

FROMM | STRAPPING SOLUTIONS



Further information:
www.fromm-pack.com

Distributor