

## FROMM FSM Neo Automatic Strapping Machine

The FROMM FSM Neo Strapping Machine is a revolutionary new addition to the Fromm range of Automatic Inline Strapping Machines.

The FROMM Neo Strapping Machine is very easy to use and features an automatic cycle start by tabletop sensor, automatic strap feed, the ASLF "Anti Strap Loss Function" strap control, intuitive touchscreen operating unit and the exclusive eject function to avoid strap jams and automatic strap feed. The FSM Neo can be used with PP or PET strap in 5 to 12mm widths with a maximum of 325N Tension.

The FROMM FSM Neo Strapping Machine is robust, powerful and extremely low maintenance.

### Polypropylene (PP) Strap

For optimal strapping efficiency we recommend our range of Polypropylene machine strap. Talk to our friendly staff today!

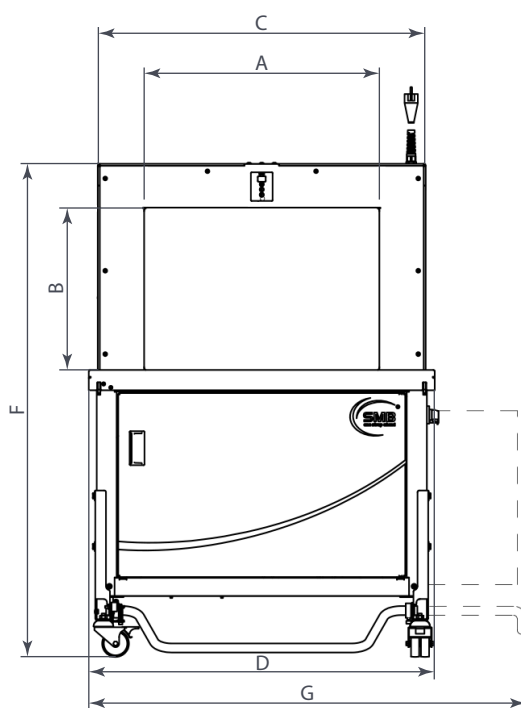


### ★ Features

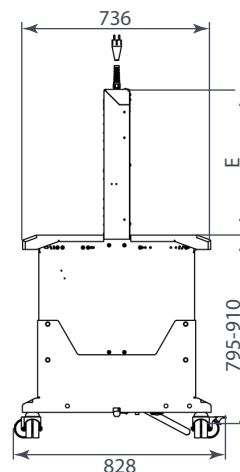
- ASLF 'Anti-Strap-Loss-Function' constant strap control
- Exclusive eject function avoids strap jams
- Torque controlled strap tension, adjustable
- High speed strapping
- Automatic strap threading

### + Benefits

- Simple 30 seconds strap jam removal (no tools required)
- Plug and play technology - easy installation
- User friendly
- Robust with low maintenance
- FROMM 2 year warranty



Arch Size WxH		600 x 400	600 x 600
Total Length	D	956	956
Total Length + Coil	G	1210	1210
Total Height	F	1365-1485	1565-1685
Inner Width (Arch)	A	650	650
Arch Width	C	910	910
Inner Height (Arch)	B	448	648
Arch Height	E	573	773
Table Height with Casters		795-910	795-910



## ★ Technical Specifications

### Capacity:

Single strap, straps/minute up to: 55

### Bundles:

Min. Width (mm): 55

Max. bundle width dependent on arch size

Min. Height (mm): 5

Max. bundle height dependent on arch size

Max. Weight (kg): 30

### Strap Tension:

Adjustable

Max. Tension at bundle (N): 325

### Strapping Material:

Polypropylene

Width (mm): 5 - 12

Thickness (mm): 0.40 - 0.65

### Sealing Method:

Heat seal

### Power Supply:

240V, Single Phase, 50 Hz

Power consumption approx. (kW): 0.2

### Standard Arch Sizes:

600 x 400mm and 600 x 600mm

### Weight:

Total weight approx. (kg): 180

### Operating Conditions:

Temperature range (°C): 5 - 45

**FROMM** | PACKAGING AUSTRALIA

Australia Wide

T 1800 023 890

E info@fromm-pack.com.au

W www.fromm-pack.com.au